

Springtime Riverside Stormwater Drainage

This information sheet outlines the requirements for stormwater drainage for the Springtime Riverside Estate.

The stormwater drainage system has been designed on two lot typologies, connected and disconnected overflow. All lots are to contain the first 6mm of rainfall from all hard surfaces (roof and external home pavements) in the front setback area within the boundary of the lot, prior to overflow to the street system.

Connected Lots

Lots in stages 1 to 2B have been provided with an outlet connection. Lots shall contain the first 6mm of rainfall in soakage devices installed in the front setback area, with high level pipe overflow to the connection provided.

Soakwell units shall not exceed 1200mm in depth.

The soakwells installed shall be interconnected.

Details for the high level overflow are available in the house connection standard detail available from the City's website.

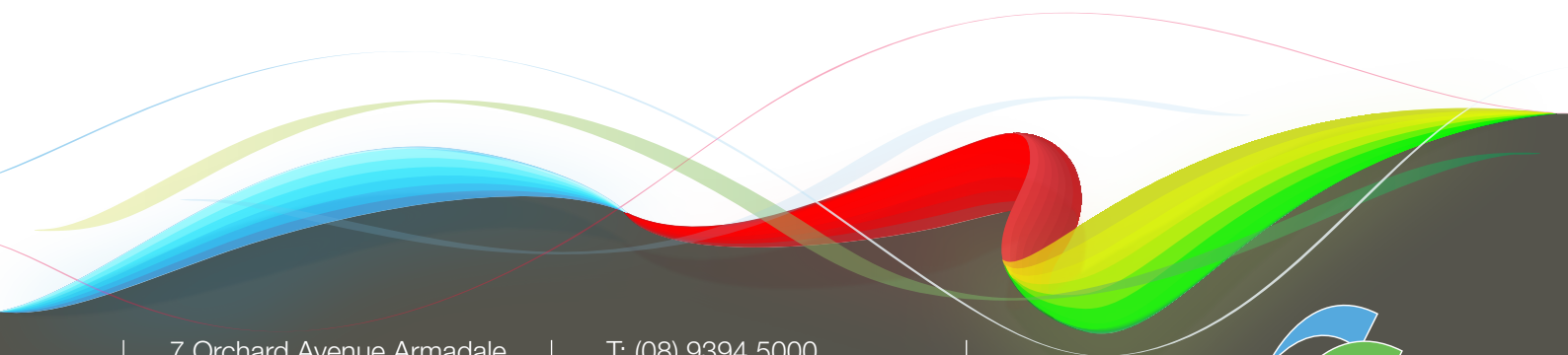
Disconnected Lots

All lots without a connection pit shall contain the first 6mm of rainfall in soakage devices installed in the front setback area, with a grated outlet in the driveway.

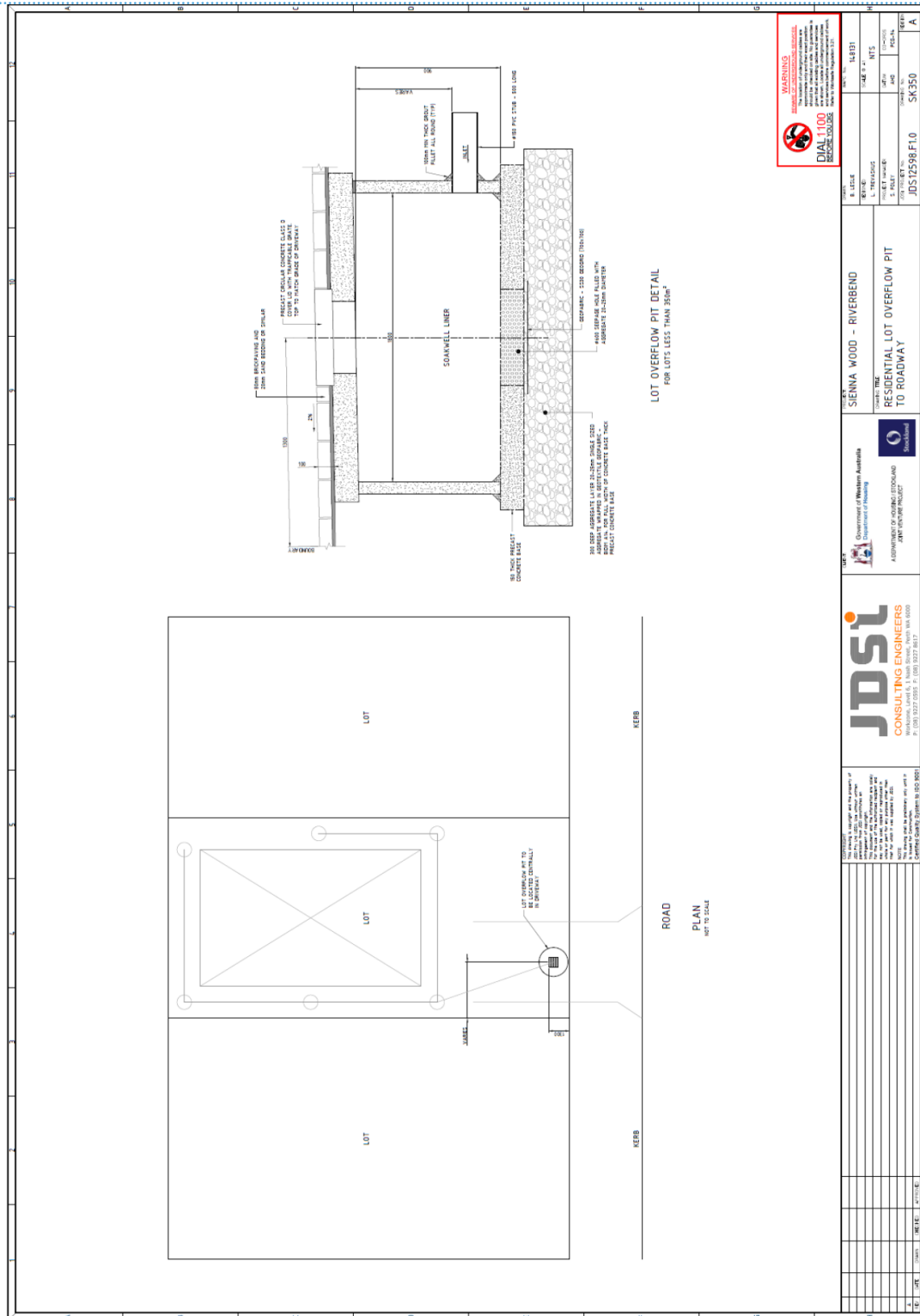
Soakwell units shall not exceed 1200mm in depth.

The soakwells installed shall be interconnected.

The typical details below provide further information on the installation of soakage devices with grated outlet In the Springtime Riverside Estate. A typical detail of a grated outlet pit is also provided.



Springtime Riverside Stormwater Drainage (Continued)



Springtime Riverside Stormwater Drainage (Continued)

